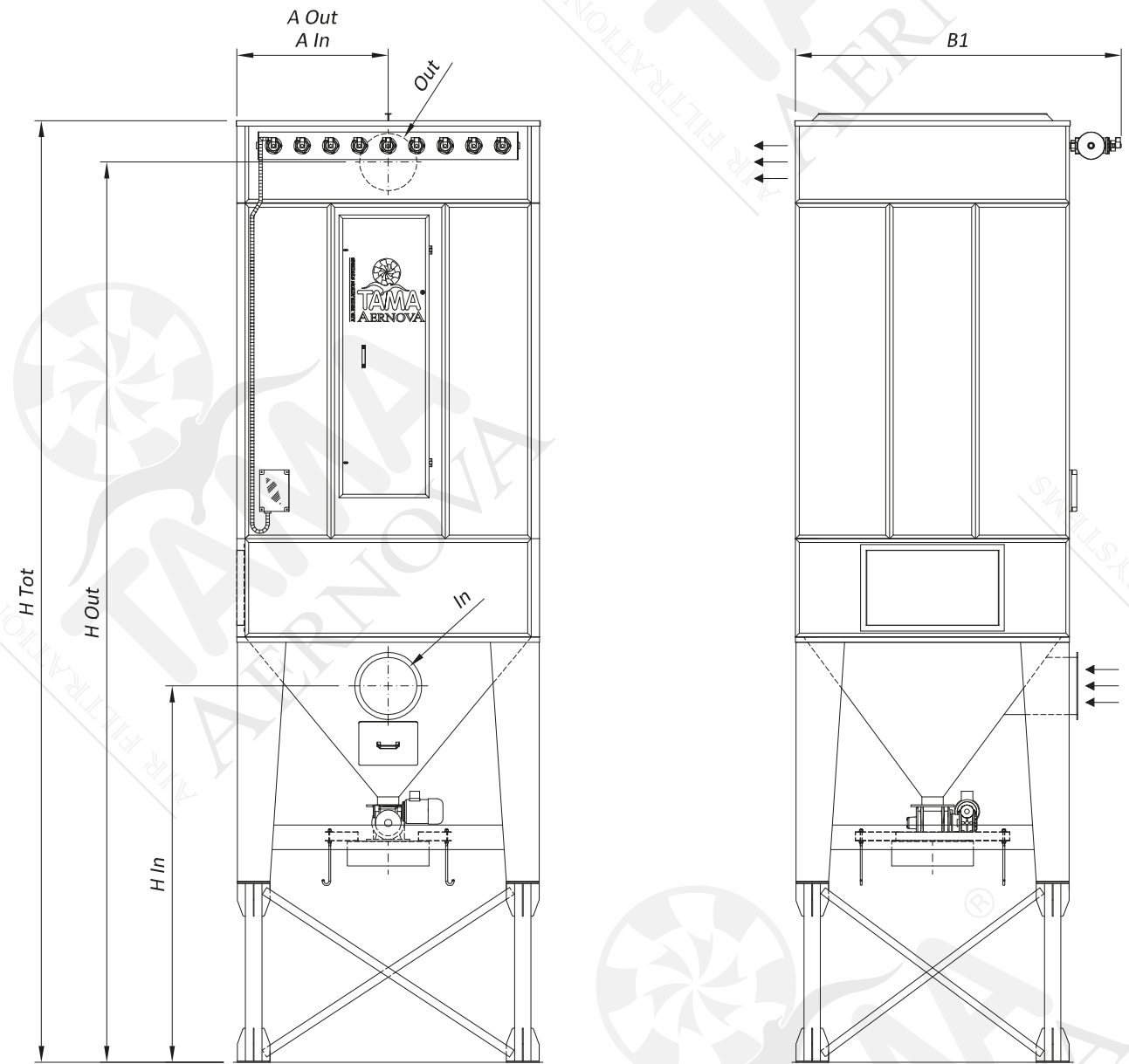


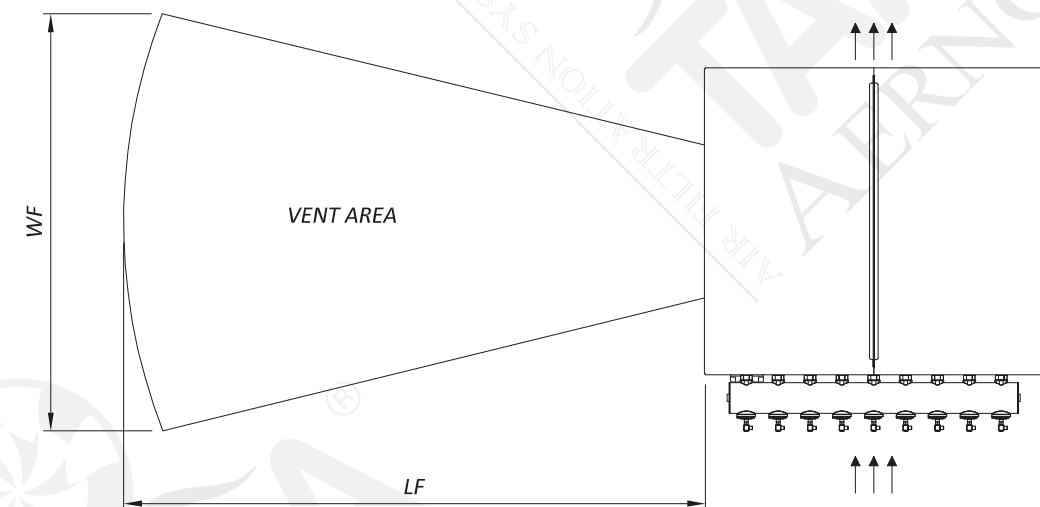
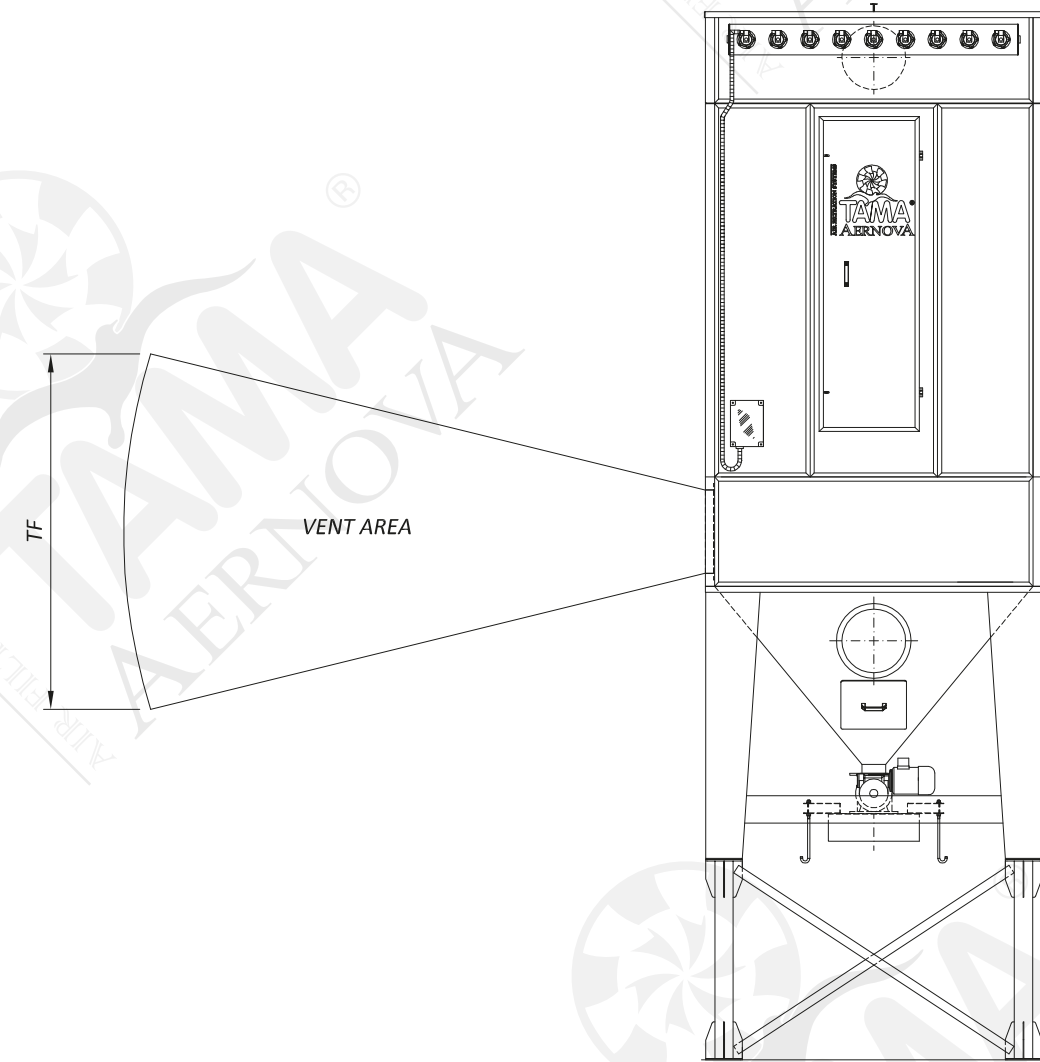
TECHNICAL SPECIFICATIONS					DIMENSIONS										
Model	Filtering surface	Number of filtering elements	Number of cleaning valves	Compressed air consumption	A	B	B1	H Tot	In	A In	H In	Out	A Out	H Out	Weight
	[m2]				[mm]	[mm]	[mm]	[mm]	[mm]	[mm]	[mm]	[mm]	[mm]	[mm]	
NSVA04x0515	12	20	4	87	975	1150	1470	5111	Ø180	487	2310	Ø220	487	4855	710
NSVA04x0520	15	20	4	87	975	1150	1470	5611	Ø200	487	2300	Ø250	487	5355	785
NSVA04x0525	19	20	4	87	975	1150	1470	6111	Ø220	487	2290	Ø280	487	5855	835
NSVA06x0515	17	30	6	87	1325	1150	1470	5111	Ø200	662	2300	Ø280	662	4855	820
NSVA06x0520	23	30	6	87	1325	1150	1470	5611	Ø250	662	2275	Ø315	662	5355	895
NSVA06x0525	29	30	6	87	1325	1150	1470	6111	Ø280	662	2260	Ø350	662	5855	970
NSVA06x0615	21	36	6	87	1325	1325	1645	5111	Ø220	662	2290	Ø300	662	4855	850
NSVA06x0620	28	36	6	87	1325	1325	1645	5611	Ø280	662	2260	Ø350	662	5355	950
NSVA06x0625	35	36	6	87	1325	1325	1645	6111	Ø300	662	2250	350 x 350	662	5855	1025
NSVA06x0715	24	42	6	87	1325	1500	1820	5361	Ø250	662	2525	Ø315	662	5105	930
NSVA06x0720	32	42	6	87	1325	1500	1820	5861	Ø280	662	2510	350 x 350	662	5605	1030
NSVA06x0725	41	42	6	87	1325	1500	1820	6361	Ø315	662	2492	400 x 350	662	6105	1130
NSVA06x0815	28	48	6	87	1325	1675	1995	5361	Ø280	662	2510	Ø350	662	5105	1010
NSVA06x0820	37	48	6	87	1325	1675	1995	5861	Ø300	662	2500	400 x 350	662	5605	1110
NSVA06x0825	46	48	6	87	1325	1675	1995	6361	Ø350	662	2475	450 x 350	662	6105	1210
NSVA07x0715	28	49	7	87	1500	1500	1820	5361	Ø280	750	2510	Ø350	750	5105	1010
NSVA07x0720	38	49	7	87	1500	1500	1820	5861	Ø315	750	2492	400 x 350	750	5605	1110
NSVA07x0725	47	49	7	87	1500	1500	1820	6361	Ø350	750	2475	450 x 350	750	6105	1235
NSVA07x0815	32	56	7	87	1500	1675	1995	5361	Ø280	750	2510	350 x 350	750	5105	1040
NSVA07x0820	43	56	7	87	1500	1675	1995	5861	Ø315	750	2492	450 x 350	750	5605	1165
NSVA07x0825	54	56	7	87	1500	1675	1995	6361	Ø380	750	2460	550 x 350	750	6105	1290
NSVA08x0815	37	64	8	87	1675	1675	1995	5361	Ø300	837	2500	400 x 350	837	5105	1125
NSVA08x0820	49	64	8	87	1675	1675	1995	5861	Ø350	837	2475	500 x 350	837	5605	1250
NSVA08x0825	62	64	8	87	1675	1675	1995	6361	Ø400	837	2450	600 x 350	837	6105	1375
NSVA09x0815	42	72	9	87	1850	1675	1995	5361	Ø315	925	2492	400 x 350	925	5105	1155
NSVA09x0820	56	72	9	87	1850	1675	1995	5861	Ø380	925	2460	550 x 350	925	5605	1305
NSVA09x0825	70	72	9	87	1850	1675	1995	6361	Ø420	925	2440	700 x 350	925	6105	1430
NSVA09x0920	63	81	9	87	1850	1850	2170	5761	Ø400	925	2350	600 x 350	925	5505	1365
NSVA09x0925	78	81	9	87	1850	1850	2170	6261	Ø450	925	2325	750 x 350	925	6005	1515
NSVA09x0930	94	81	9	217	1850	1850	2210	6761	Ø480	925	2310	900 x 350	925	6505	1690
NSVA09x1020	70	90	9	87	1850	2025	2345	5861	Ø420	925	2440	700 x 350	925	5605	1470
NSVA09x1025	87	90	9	87	1850	2025	2345	6361	Ø480	925	2410	850 x 350	925	6105	1620
NSVA09x1030	104	90	9	217	1850	2025	2385	6861	Ø520	925	2390	1000 x 350	925	6605	1795



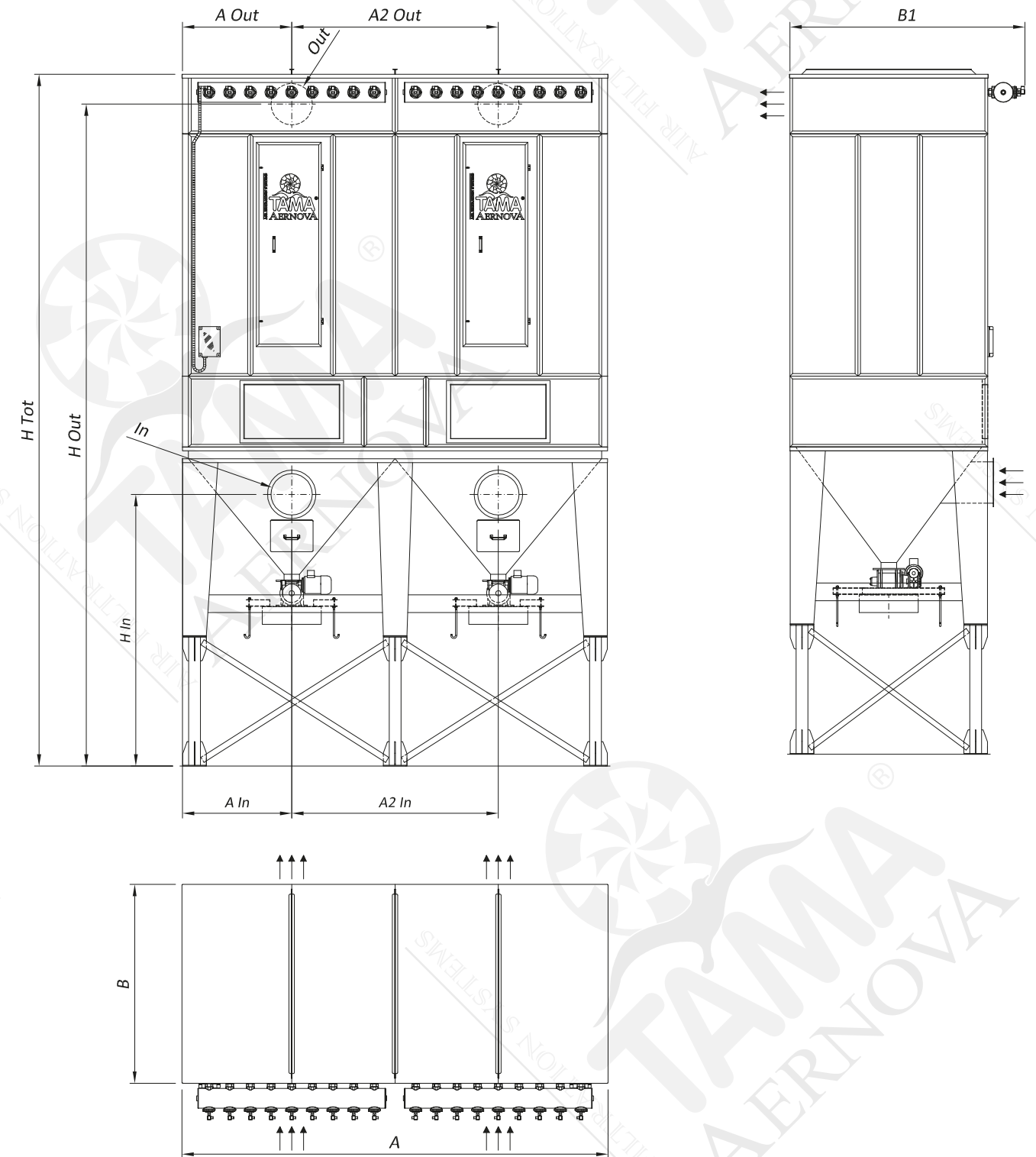
TECHNICAL SPECIFICATIONS		
Certification code	II 3 D Ex h IIC T200°C Dc -10°C<T<40°C	
Max working negative pressure	Pa	5000
Working Temperature	°C	-10<T<40
Electric control panel feeding	230 V AC 50Hz	
Bag cleaning system	pulse-jet	
Compressed air tank working pressure	bar	5
Rotary valve solid discharge**	mc/h	2
Rotary valve power**	kW	0,5

** The rotary valve is available also with other configurations. The data are referred to a single rotary valve.

EXPLOSION CHARACTERISTICS				DIMENSIONS		
Model	Number of venting panels	P max	Kst	LF	WF	TF
	[-]	[bar]	[m bar/s]	[m]	[m]	[m]
NSVA04x0515	1	8,9	199	13	4	4
NSVA04x0520	1	8,9	199	13	4	4
NSVA04x0525	1	8	150	13	4	4
NSVA06x0515	1	8	150	14	4	4
NSVA06x0520	1	8	150	14	4	4
NSVA06x0525	1	8	150	15	4	4
NSVA06x0615	1	8	150	14	4	4
NSVA06x0620	1	8	150	15	5	5
NSVA06x0625	1	8	120	15	5	5
NSVA06x0715	1	8	150	15	5	5
NSVA06x0720	1	8	120	16	5	5
NSVA06x0725	1	8	120	16	5	5
NSVA06x0815	1	8	150	16	5	5
NSVA06x0820	1	8	120	16	5	5
NSVA06x0825	1	8	100	17	5	5
NSVA07x0715	1	8	150	16	5	5
NSVA07x0720	1	8	120	16	5	5
NSVA07x0725	1	8	100	17	5	5
NSVA07x0815	1	8	150	16	5	5
NSVA07x0820	1	8	120	17	5	5
NSVA07x0825	1	8	100	17	5	5
NSVA08x0815	1	8	120	17	5	5
NSVA08x0820	1	8	100	18	5	5
NSVA08x0825	1	8	90	18	5	5
NSVA09x0815	1	8	120	17	5	5
NSVA09x0820	1	8	100	18	5	5
NSVA09x0825	1	8	80	19	6	6
NSVA09x0920	1	8	100	19	6	6
NSVA09x0925	1	8	80	19	6	6
NSVA09x0930	1	8	70	20	6	6
NSVA09x1020	2	8	150	19	7	6
NSVA09x1025	2	8	150	20	7	6
NSVA09x1030	2	8	150	20	7	6



TECHNICAL SPECIFICATIONS						DIMENSIONS												
Model	Filtering surface	Number of filtering elements	Number of hoppers	Number of cleaning valves	Compressed air consumption	A	B	B1	H Tot	In	A In	A2 In	H In	Out	A Out	A2 Out	H Out	Weight
	[m ²]	[-]	[-]	[-]	[Nl/activ]	[mm]	[mm]	[mm]	[mm]	[mm]	[mm]	[mm]	[mm]	[mm]	[mm]	[mm]	[mm]	[kg]
NSVA12x0820	74	96	2	12	87	2550	1675	1995	5961	2 x (Ø300)	650	1250	2500	2 x (400 x 350)	662	1225	5705	1860
NSVA12x0825	93	96	2	12	87	2550	1675	1995	6461	2 x (Ø350)	650	1250	2475	2 x (450 x 350)	662	1225	6205	2010
NSVA12x0830	111	96	2	12	217	2550	1675	2035	6961	2 x (Ø380)	650	1250	2460	2 x (550 x 350)	662	1225	6705	2210
NSVA14x0820	87	112	2	14	87	2900	1675	1995	5961	2 x (Ø350)	737	1425	2475	2 x (450 x 350)	750	1400	5705	2025
NSVA14x0825	108	112	2	14	87	2900	1675	1995	6461	2 x (Ø380)	737	1425	2460	2 x (550 x 350)	750	1400	6205	2200
NSVA14x0830	130	112	2	14	217	2900	1675	2035	6961	2 x (Ø400)	737	1425	2450	2 x (650 x 350)	750	1400	6705	2425
NSVA12x1020	93	120	2	12	87	2550	2025	2345	6061	2 x (Ø350)	650	1250	2575	2 x (450 x 350)	662	1225	5805	2105
NSVA12x1025	116	120	2	12	87	2550	2025	2345	6561	2 x (Ø380)	650	1250	2560	2 x (600 x 350)	662	1225	6305	2280
NSVA12x1030	139	120	2	12	217	2550	2025	2385	7061	2 x (Ø420)	650	1250	2540	2 x (700 x 350)	662	1225	6805	2505
NSVA16x0820	99	128	2	16	87	3250	1675	1995	6061	2 x (Ø350)	825	1600	2575	2 x (500 x 350)	837	1575	5805	2190
NSVA16x0825	124	128	2	16	87	3250	1675	1995	6561	2 x (Ø400)	825	1600	2550	2 x (600 x 350)	837	1575	6305	2365
NSVA16x0830	148	128	2	16	217	3250	1675	2035	7061	2 x (Ø420)	825	1600	2540	2 x (750 x 350)	837	1575	6805	2615
NSVA18x0820	111	144	2	18	87	3600	1675	1995	6061	2 x (Ø380)	912	1775	2560	2 x (550 x 350)	925	1750	5805	2330
NSVA18x0825	139	144	2	18	87	3600	1675	1995	6561	2 x (Ø420)	912	1775	2540	2 x (700 x 350)	925	1750	6305	2530
NSVA18x0830	167	144	2	18	217	3600	1675	2035	7061	2 x (Ø450)	912	1775	2525	2 x (800 x 350)	925	1750	6805	2805
NSVA18x0920	125	162	2	18	87	3600	1850	2170	5961	2 x (Ø400)	912	1775	2450	2 x (600 x 350)	925	1750	5705	2445
NSVA18x0925	156	162	2	18	87	3600	1850	2170	6461	2 x (Ø450)	912	1775	2425	2 x (750 x 350)	925	1750	6205	2670
NSVA18x0930	188	162	2	18	217	3600	1850	2210	6961	2 x (Ø480)	912	1775	2410	2 x (900 x 350)	925	1750	6705	2945
NSVA22x0820	136	176	2	22	87	4300	1675	1995	6261	2 x (Ø420)	1087	2125	2740	2 x (650 x 350)	1100	2100	6005	2655
NSVA22x0825	170	176	2	22	87	4300	1675	1995	6761	2 x (Ø480)	1087	2125	2710	2 x (850 x 350)	1100	2100	6505	2930
NSVA22x0830	204	176	2	22	217	4300	1675	2035	7261	2 x (Ø500)	1087	2125	2700	2 x (1000 x 350)	1100	2100	7005	3230
NSVA18x1020	139	180	2	18	87	3600	2025	2345	5961	2 x (Ø420)	912	1775	2440	2 x (700 x 350)	925	1750	5705	2560
NSVA18x1025	174	180	2	18	87	3600	2025	2345	6461	2 x (Ø480)	912	1775	2410	2 x (850 x 350)	925	1750	6205	2810
NSVA18x1030	209	180	2	18	217	3600	2025	2385	6961	2 x (Ø520)	912	1775	2390	2 x (1000 x 350)	925	1750	6705	3110
NSVA24x0820	148	192	3	24	87	4825	1675	1995	6061	3 x (Ø350)	820	1591	2575	3 x (500 x 350)	837	1575	5805	3130
NSVA24x0825	185	192	3	24	87	4825	1675	1995	6561	3 x (Ø400)	820	1591	2550	3 x (600 x 350)	837	1575	6305	3405
NSVA24x0830	222	192	3	24	217	4825	1675	2035	7061	3 x (Ø420)	820	1591	2540	3 x (750 x 350)	837	1575	6805	3780
NSVA27x0820	167	216	3	27	87	5350	1675	1995	6061	3 x (Ø380)	908	1766	2560	3 x (550 x 350)	925	1750	5805	3375
NSVA27x0825	209	216	3	27	87	5350	1675	1995	6561	3 x (Ø420)	908	1766	2540	3 x (700 x 350)	925	1750	6305	3675
NSVA27x0830	250	216	3	27	217	5350	1675	2035	7061	3 x (Ø450)	908	1766	2525	3 x (800 x 350)	925	1750	6805	4075
NSVA27x0920	188	243	3	27	87	5350	1850	2170	5961	3 x (Ø400)	908	1766	2450	3 x (600 x 350)	925	1750	5705	3525
NSVA27x0925	235	243	3	27	87	5350	1850	2170	6461	3 x (Ø450)	908	1766	2425	3 x (750 x 350)	925	1750	6205	3850
NSVA27x0930	282	243	3	27	217	5350	1850	2210	6961	3 x (Ø480)	908	1766	2410	3 x (900 x 350)	925	1750	6705	4275
NSVA30x1020	232	300	3	30	87	5875	2025	2345	6061	3 x (Ø450)	995	1941	2525	3 x (750 x 350)	1012	1925	5805	3970
NSVA30x1025	290	300	3	30	87	5875	2025	2345	6561	3 x (Ø500)	995	1941	2500	3 x (950 x 350)	1012	1925	6305	4345
NSVA30x1030	348	300	3	30	217	5875	2025	2385	7061	3 x (Ø550)	995	1941	2475	3 x (1150 x 350)	1012	1925	6805	4845
NSVA33x1020	255	330	3	33	87	6400	2025	2345	6261	3 x (Ø480)	1083	2116	2710	3 x (850 x 350)	1100	2100	6005	4295
NSVA33x1025	319	330	3	33	87	6400	2025	2345	6761	3 x (Ø520)	1083	2116	2690	3 x (1050 x 350)	1100	2100	6505	4695
NSVA33x1030	382	330	3	33	217	6400	2025	2385	7261	3 x (Ø580)	1083	2116	2660	3 x (1250 x 350)	1100	2100	7005	5195
NSVA36x1020	278	360	3	36	87	6925	2025	2345	6461	3 x (Ø480)	1170	2291	2910	3 x (900 x 350)	1187	2275	6205	4625
NSVA36x1025	348	360	3	36	87	6925	2025	2345	6961	3 x (Ø550)	1170	2291	2875	3 x (1150 x 350)	1187	2275	6705	5050
NSVA36x1030	417	360	3	36	217	6925	2025	2385	7461	3 x (Ø600)	1170	2291	2850	3 x (1350 x 350)	1187	2275	7205	5600
NSVA44x1025	425	440	4	44	217	8500	2025	2385	6761	4 x (Ø520)	1081	2112	2690	4 x (1050 x 350)	1100	2100	6505	6350
NSVA44x1030	510	440	4	44	217	8500	2025	2385	7261	4 x (Ø580)	1081	2112	2660	4 x (1250 x 350)	1100	2100	7005	6850
NSVA50x1025	483	500	5	50	217	9725	2025	2385	6561	5 x (Ø500)	992	1935	2500	5 x (950 x 350)	1012	1925	6305	7335
NSVA50x1030	579	500	5	50	217	9725	2025	2385	7061	5 x (Ø550)	992	1935	2475	5 x (1150 x 350)	1012	1925	6805	7910
NSVA60x1025	579	600	6	60	217	11650	2025	2385	6561	6 x (Ø500)	991	1933	2500	6 x (950 x 350)	1012	1925	6305	8830
NSVA60x1030	695	600	6	60	217	11650	2025	2385	7061	6 x (Ø550)	991	1933	2475	6 x (1150 x 350)	1012	1925	6805	9505



TECHNICAL SPECIFICATIONS		
Certification code	II 3 D Ex h IIC T200°C Dc -10°C<T<40°C	
Max working negative pressure	Pa	5000
Working Temperature	°C	-10<T<40
Electric control panel feeding	230 V AC 50Hz	
Bag cleaning system	pulse-jet	
Compressed air tank working pressure	bar	5
Rotary valve solid discharge**	mc/h	2
Rotary valve power**	kW	0,5

** The rotary valve is available also with other configurations. The data are referred to a single rotary valve.

Model	EXPLOSION CHARACTERISTICS			DIMENSIONS		
	Number of venting panels	P max	Kst	LF	WF	TF
	[-]	[bar]	[m bar/s]	[m]	[m]	[m]
NSVA12x0820	2	8	150	20	8	6
NSVA12x0825	2	8	150	21	8	6
NSVA12x0830	2	8	120	22	8	6
NSVA14x0820	3	8,9	199	21	8	6
NSVA14x0825	3	8,9	199	22	8	6
NSVA14x0830	3	8	150	22	9	7
NSVA12x1020	2	8	150	22	8	6
NSVA12x1025	2	8	150	23	9	7
NSVA12x1030	2	8	120	23	9	7
NSVA16x0820	3	8,9	199	22	9	7
NSVA16x0825	3	8,9	199	23	9	7
NSVA16x0830	3	8	150	23	9	7
NSVA18x0820	3	8,9	199	23	10	7
NSVA18x0825	3	8,9	199	23	10	7
NSVA18x0830	3	8	150	24	10	7
NSVA18x0920	3	8,9	199	23	10	7
NSVA18x0925	3	8,9	199	24	10	7
NSVA18x0930	3	8	150	25	10	7
NSVA22x0820	3	8,9	199	24	10	7
NSVA22x0825	4	8,9	199	25	10	7
NSVA22x0830	4	8,9	199	26	11	8
NSVA18x1020	3	8,9	199	24	10	7
NSVA18x1025	3	8	150	25	10	7
NSVA18x1030	3	8	150	25	10	7
NSVA24x0820	3	8,9	199	25	10	7
NSVA24x0825	4	8,9	199	26	12	8
NSVA24x0830	5	8,9	199	27	12	8
NSVA27x0820	4	8,9	199	26	12	8
NSVA27x0825	4	8,9	199	27	12	8
NSVA27x0830	5	8,9	199	27	12	8
NSVA27x0920	4	8,9	199	27	12	8
NSVA27x0925	4	8,9	199	28	12	8
NSVA27x0930	5	8,9	199	28	12	8
NSVA30x1020	4	8,9	199	29	12	8
NSVA30x1025	4	8,9	199	29	13	9
NSVA30x1030	5	8,9	199	30	14	9
NSVA33x1020	5	8,9	199	29	14	9
NSVA33x1025	5	8,9	199	30	14	9
NSVA33x1030	5	8,9	199	31	14	9
NSVA36x1020	5	8,9	199	31	14	9
NSVA36x1025	5	8,9	199	31	14	9
NSVA36x1030	5	8,9	199	32	14	9
NSVA44x1025	6	8,9	199	33	17	10
NSVA44x1030	6	8,9	199	34	17	10
NSVA50x1025	6	8,9	199	35	18	10
NSVA50x1030	7	8,9	199	36	18	10
NSVA60x1025	7	8,9	199	37	21	11
NSVA60x1030	7	8,9	199	38	21	11

