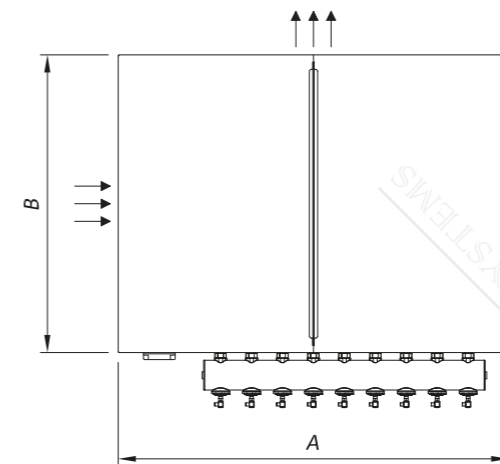
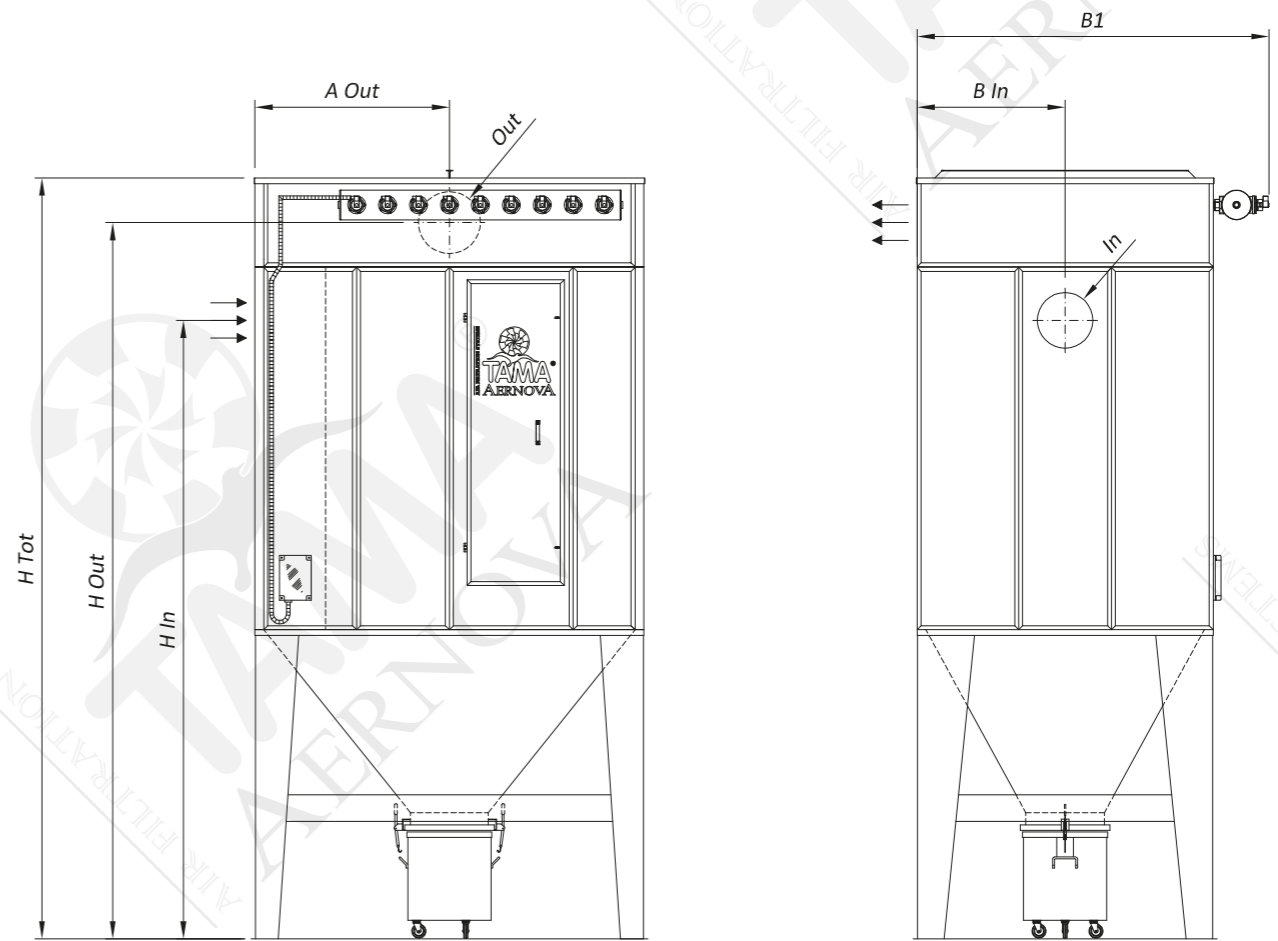
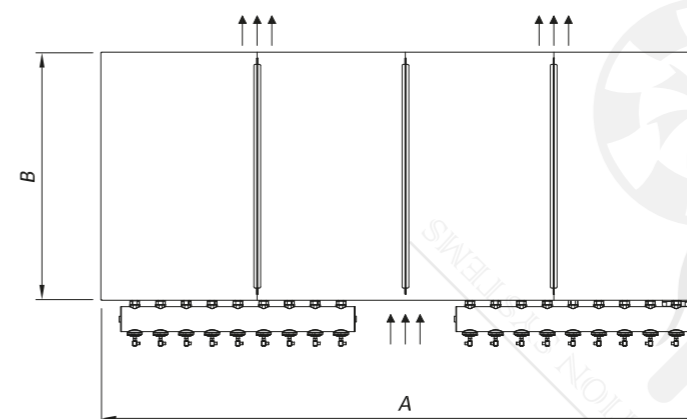
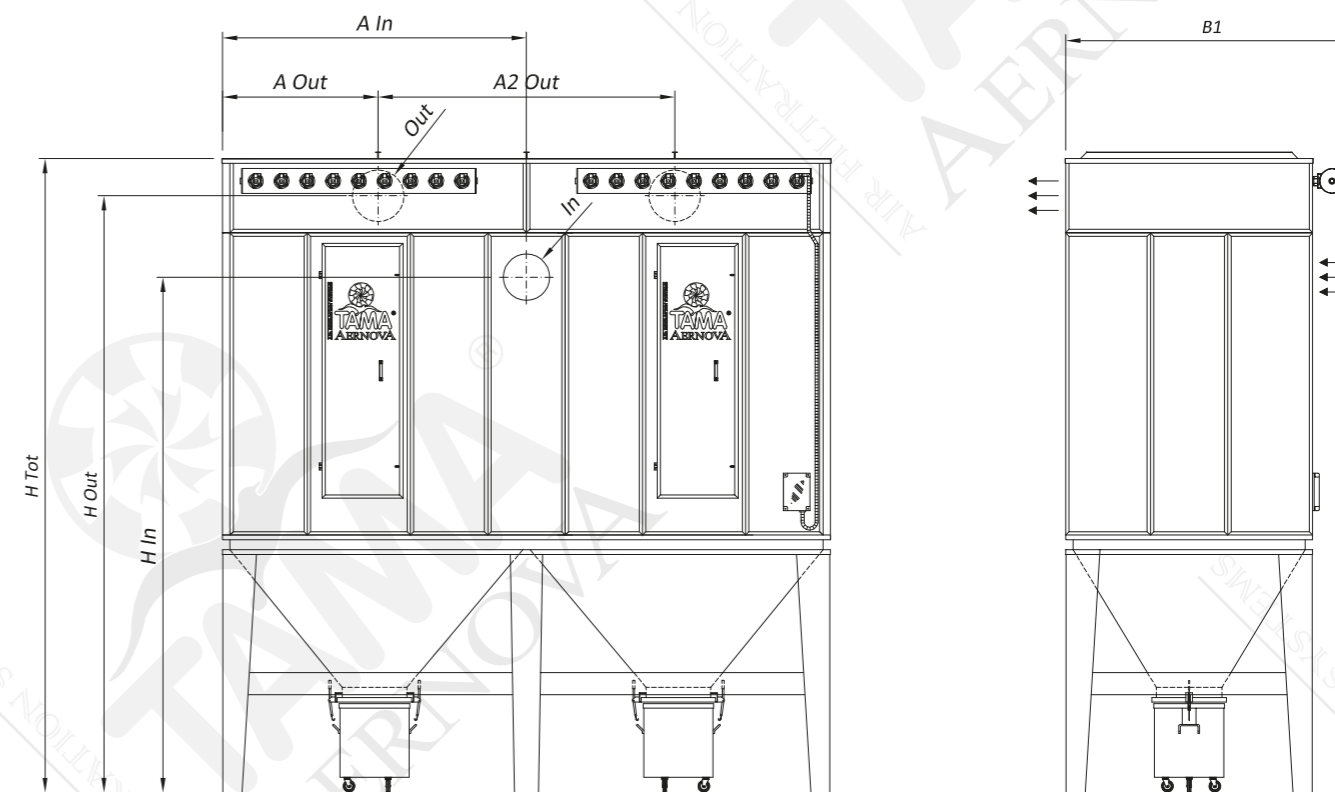


TECHNICAL SPECIFICATIONS					DIMENSIONS										
Model	Filtering surface	Number of filtering elements	Number of cleaning valves	Compressed air consumption	A	B	B1	H Tot	In	B In	H In	Out	A Out	H Out	Weight
	[m ²]	[-]	[-]	[Nl/activ.]	[mm]	[mm]	[mm]	[mm]	[mm]	[mm]	[mm]	[mm]	[mm]	[mm]	[kg]
CSB04x0515	12	20	4	87	1325	1150	1470	3311	Ø180	312	2560	Ø220	662	3055	545
CSB04x0520	15	20	4	87	1325	1150	1470	3811	Ø200	312	3050	Ø250	662	3555	645
CSB04x0525	19	20	4	87	1325	1150	1470	4311	Ø220	312	3540	Ø280	662	4055	720
CSB06x0515	17	30	6	87	1675	1150	1470	3561	Ø200	312	2800	Ø280	837	3305	680
CSB06x0520	23	30	6	87	1675	1150	1470	4061	Ø250	312	3275	Ø315	837	3805	780
CSB06x0525	29	30	6	87	1675	1150	1470	4561	Ø280	312	3760	Ø350	837	4305	880
CSB06x0615	21	36	6	87	1675	1325	1645	3561	Ø220	400	2790	Ø300	837	3305	735
CSB06x0620	28	36	6	87	1675	1325	1645	4061	Ø280	400	3260	Ø350	837	3805	835
CSB06x0625	35	36	6	87	1675	1325	1645	4561	Ø300	400	3750	350 x 350	837	4305	960
CSB06x0715	24	42	6	87	1675	1500	1820	3561	Ø250	750	2775	Ø315	837	3305	815
CSB06x0720	32	42	6	87	1675	1500	1820	4061	Ø280	750	3260	350 x 350	837	3805	915
CSB06x0725	41	42	6	87	1675	1500	1820	4561	Ø315	750	3742	400 x 350	837	4305	1040
CSB06x0815	28	48	6	87	1675	1675	1995	3561	Ø280	837	2760	Ø350	837	3305	850
CSB06x0820	37	48	6	87	1675	1675	1995	4061	Ø300	837	3250	400 x 350	837	3805	975
CSB06x0825	46	48	6	87	1675	1675	1995	4561	Ø350	837	3725	450 x 350	837	4305	1100
CSB07x0715	28	49	7	87	1850	1500	1820	3561	Ø280	750	2760	Ø350	925	3305	850
CSB07x0720	38	49	7	87	1850	1500	1820	4061	Ø315	750	3242	400 x 350	925	3805	975
CSB07x0725	47	49	7	87	1850	1500	1820	4561	Ø350	750	3725	450 x 350	925	4305	1100
CSB07x0815	32	56	7	87	1850	1675	1995	3561	Ø280	837	2760	350 x 350	925	3305	880
CSB07x0820	43	56	7	87	1850	1675	1995	4061	Ø315	837	3242	450 x 350	925	3805	1030
CSB07x0825	54	56	7	87	1850	1675	1995	4561	Ø380	837	3710	550 x 350	925	4305	1180
CSB08x0815	37	64	8	87	2025	1675	1995	3661	Ø300	837	2850	400 x 350	1012	3405	990
CSB08x0820	49	64	8	87	2025	1675	1995	4161	Ø350	837	3325	500 x 350	1012	3905	1140
CSB08x0825	62	64	8	87	2025	1675	1995	4661	Ø400	837	3800	600 x 350	1012	4405	1290
CSB09x0815	42	72	9	87	2200	1675	1995	3761	Ø315	837	2942	400 x 350	1100	3505	1045
CSB09x0820	56	72	9	87	2200	1675	1995	4261	Ø380	837	3410	550 x 350	1100	4005	1170
CSB09x0825	70	72	9	87	2200	1675	1995	4761	350 x 400	837	3900	700 x 350	1100	4505	1345
CSB09x0920	63	81	9	87	2200	1850	2170	4261	Ø400	925	3400	600 x 350	1100	4005	1255
CSB09x0925	78	81	9	87	2200	1850	2170	4761	Ø450	925	3875	750 x 350	1100	4505	1430
CSB09x0930	94	81	9	217	2200	1850	2210	5261	Ø480	925	4360	900 x 350	1100	5005	1630
CSB09x1020	70	90	9	87	2200	2025	2345	4261	350 x 400	837	3400	700 x 350	1100	4005	1365
CSB09x1025	87	90	9	87	2200	2025	2345	4761	350 x 500	837	3850	850 x 350	1100	4505	1540
CSB09x1030	104	90	9	217	2200	2025	2385	5261	350 x 600	837	4300	1000 x 350	1100	5005	1765



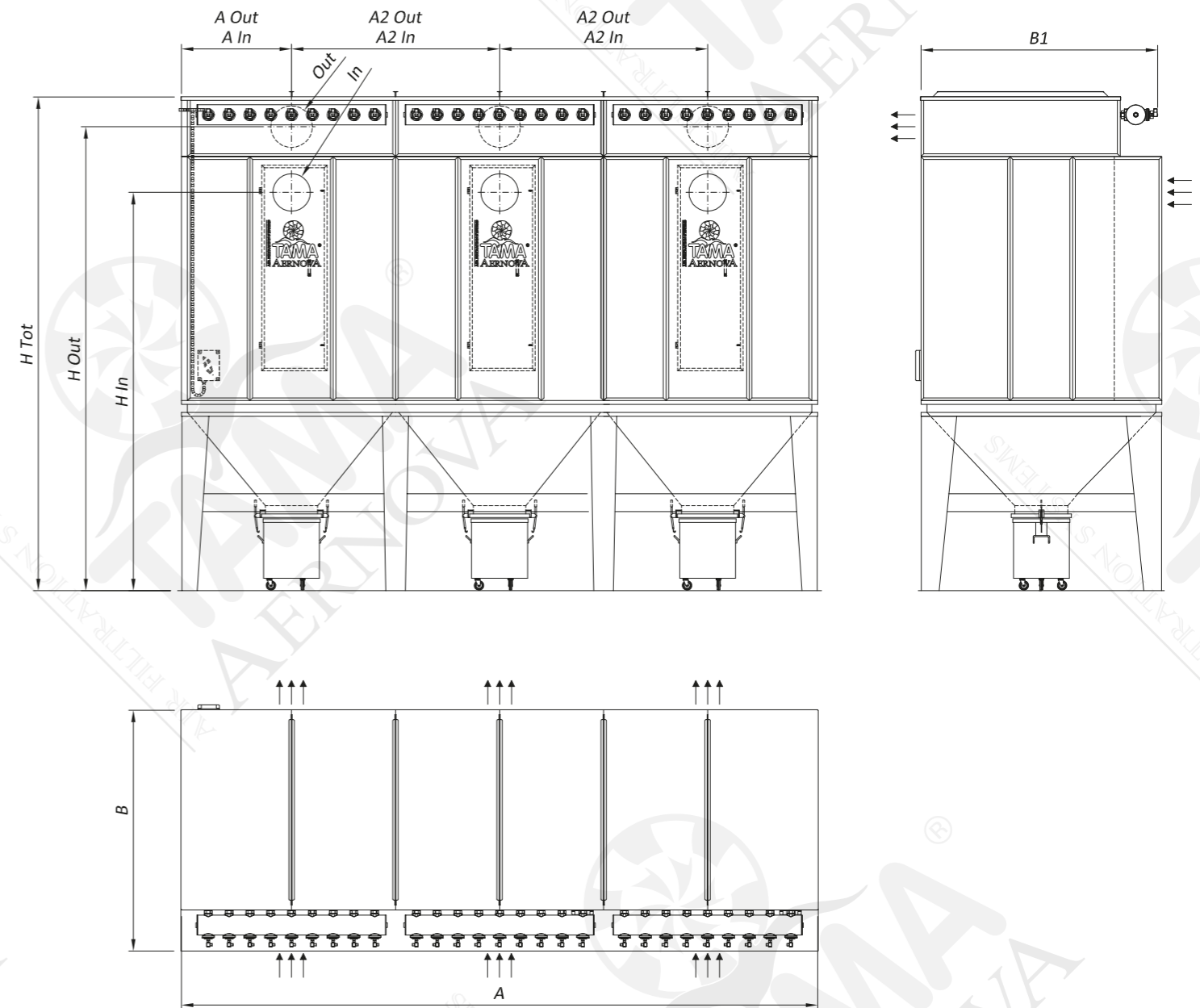
TECHNICAL SPECIFICATIONS		
Max working negative pressure	Pa	5000
Working Temperature	°C	-10<T<80
Electric control panel feeding	230 V AC 50Hz	
Bag cleaning system	pulse-jet	
Compressed air tank working pressure	bar	5

TECHNICAL SPECIFICATIONS						DIMENSIONS											
Model	Filtering surface	Number of filtering elements	Number of hoppers	Number of cleaning valves	Compressed air consumption	A	B	B1	H Tot	In	A In	H In	Out	A Out	A2 Out	H Out	Weight
	[m ²]	[-]	[-]	[-]	[Nl/activ.]	[mm]	[mm]	[mm]	[mm]	[mm]	[mm]	[mm]	[mm]	[mm]	[mm]	[mm]	[kg]
CSB12x0820	74	96	2	12	87	3075	1675	1995	4061	350 x 450	1537	3175	2 x (400 x 350)	793	1488	3805	1680
CSB12x0825	93	96	2	12	87	3075	1675	1995	4561	350 x 550	1537	3625	2 x (450 x 350)	793	1488	4305	1905
CSB12x0830	111	96	2	12	217	3075	1675	2035	5061	350 x 650	1537	4075	2 x (550 x 350)	793	1488	4805	2155
CSB14x0820	87	112	2	14	87	3425	1675	1995	4061	350 x 500	1712	3150	2 x (450 x 350)	881	1663	3805	1795
CSB14x0825	108	112	2	14	87	3425	1675	1995	4561	350 x 650	1712	3575	2 x (550 x 350)	881	1663	4305	2045
CSB14x0830	130	112	2	14	217	3425	1675	2035	5061	350 x 750	1712	4025	2 x (650 x 350)	881	1663	4805	2320
CSB12x1020	93	120	2	12	87	3075	2025	2345	4261	350 x 550	1537	3325	2 x (450 x 350)	793	1488	4005	1960
CSB12x1025	116	120	2	12	87	3075	2025	2345	4761	350 x 700	1537	3750	2 x (600 x 350)	793	1488	4505	2210
CSB12x1030	139	120	2	12	217	3075	2025	2385	5261	350 x 800	1537	4200	2 x (700 x 350)	793	1488	5005	2485
CSB16x0820	99	128	2	16	87	3775	1675	1995	4161	350 x 600	1887	3200	2 x (500 x 350)	968	1838	3905	1960
CSB16x0825	124	128	2	16	87	3775	1675	1995	4661	350 x 750	1887	3625	2 x (600 x 350)	968	1838	4405	2210
CSB16x0830	148	128	2	16	217	3775	1675	2035	5161	350 x 850	1887	4075	2 x (750 x 350)	968	1838	4905	2510
CSB18x0820	111	144	2	18	87	4125	1675	1995	4261	350 x 650	2062	3275	2 x (550 x 350)	1056	2013	4005	2125
CSB18x0825	139	144	2	18	87	4125	1675	1995	4761	350 x 800	2062	3700	2 x (700 x 350)	1056	2013	4505	2400
CSB18x0830	167	144	2	18	217	4125	1675	2035	5261	350 x 1000	2062	4100	2 x (800 x 350)	1056	2013	5005	2725
CSB18x0920	125	162	2	18	87	4125	1850	2170	4261	350 x 750	2062	3225	2 x (600 x 350)	1056	2013	4005	2240
CSB18x0925	156	162	2	18	87	4125	1850	2170	4761	350 x 900	2062	3650	2 x (750 x 350)	1056	2013	4505	2515
CSB18x0930	188	162	2	18	217	4125	1850	2210	5261	350 x 1100	2062	4050	2 x (900 x 350)	1056	2013	5005	2865
CSB22x0820	136	176	2	22	87	4825	1675	1995	4461	350 x 800	2412	3400	2 x (650 x 350)	1231	2363	4205	2430
CSB22x0825	170	176	2	22	87	4825	1675	1995	4961	350 x 1000	2412	3800	2 x (850 x 350)	1231	2363	4705	2730
CSB22x0830	204	176	2	22	217	4825	1675	2035	5461	350 x 1200	2412	4200	2 x (1000 x 350)	1231	2363	5205	3105
CSB18x1020	139	180	2	18	87	4125	2025	2345	4261	350 x 800	2062	3200	2 x (700 x 350)	1056	2013	4005	2385
CSB18x1025	174	180	2	18	87	4125	2025	2345	4761	350 x 1000	2062	3600	2 x (850 x 350)	1056	2013	4505	2685
CSB18x1030	209	180	2	18	217	4125	2025	2385	5261	350 x 1200	2062	4000	2 x (1000 x 350)	1056	2013	5005	3060



TECHNICAL SPECIFICATIONS		
Max working negative pressure	Pa	5000
Working Temperature	°C	-10<T<80
Electric control panel feeding	230 V AC 50Hz	
Bag cleaning system	pulse-jet	
Compressed air tank working pressure	bar	5

TECHNICAL SPECIFICATIONS						DIMENSIONS												
Model	Filtering surface	Number of filtering elements	Number of hoppers	Number of cleaning valves	Compressed air consumption	A	B	B1	H Tot	In	A In	A2 In	H In	Out	A Out	A2 Out	H Out	Weight
	[m ²]	[-]	[-]	[-]	[N/activ.]	[mm]	[mm]	[mm]	[mm]	[mm]	[mm]	[mm]	[mm]	[mm]	[mm]	[mm]	[mm]	[kg]
CSB24x0820	148	192	3	24	87	4825	2025	1995	4261	3 x (Ø350)	1100	1313	1725	3 x (500 x 350)	1100	1313	4005	2755
CSB24x0825	185	192	3	24	87	4825	2025	1995	4761	3 x (Ø400)	1100	1313	2200	3 x (600 x 350)	1100	1313	4505	3105
CSB24x0830	222	192	3	24	217	4825	2025	2035	5261	3 x (350 x 450)	1100	1313	2675	3 x (750 x 350)	1100	1313	5005	3505
CSB27x0820	167	216	3	27	87	5350	2025	1995	4261	3 x (Ø380)	925	1750	1710	3 x (550 x 350)	925	1750	4005	2975
CSB27x0825	209	216	3	27	87	5350	2025	1995	4761	3 x (Ø420)	925	1750	2190	3 x (700 x 350)	925	1750	4505	3350
CSB27x0830	250	216	3	27	217	5350	2025	2035	5261	3 x (Ø450)	925	1750	2675	3 x (800 x 350)	925	1750	5005	3800
CSB27x0920	188	243	3	27	87	5350	2375	2345	4361	3 x (Ø400)	925	1750	1700	3 x (600 x 350)	925	1750	4105	3395
CSB27x0925	235	243	3	27	87	5350	2375	2345	4861	3 x (Ø450)	925	1750	2175	3 x (750 x 350)	925	1750	4605	3795
CSB27x0930	282	243	3	27	217	5350	2375	2385	5361	3 x (Ø480)	925	1750	2660	3 x (900 x 350)	925	1750	5105	4270
CSB30x1020	232	300	3	30	87	5875	2375	2345	4561	3 x (350 x 450)	1012	1925	1675	3 x (750 x 350)	1012	1925	4305	3770
CSB30x1025	290	300	3	30	87	5875	2375	2345	5061	3 x (350 x 600)	1012	1925	2100	3 x (950 x 350)	1012	1925	4805	4220
CSB30x1030	348	300	3	30	217	5875	2375	2385	5561	3 x (350 x 700)	1012	1925	2550	3 x (1150 x 350)	1012	1925	5305	4770
CSB33x1020	255	330	3	33	87	6400	2375	2345	4561	3 x (Ø480)	1100	2100	1660	3 x (850 x 350)	1100	2100	4305	4045
CSB33x1025	319	330	3	33	87	6400	2375	2345	5061	3 x (Ø520)	1100	2100	2140	3 x (1050 x 350)	1100	2100	4805	4520
CSB33x1030	382	330	3	33	217	6400	2375	2385	5561	3 x (Ø580)	1100	2100	2610	3 x (1250 x 350)	1100	2100	5305	5120
CSB36x1020	278	360	3	36	87	6925	2375	2345	4561	3 x (350 x 550)	1012	2450	1625	3 x (900 x 350)	1012	2450	4305	4325
CSB36x1025	348	360	3	36	87	6925	2375	2345	5061	3 x (350 x 700)	1012	2450	2050	3 x (1150 x 350)	1012	2450	4805	4825
CSB36x1030	417	360	3	36	217	6925	2375	2385	5561	3 x (350 x 800)	1012	2450	2500	3 x (1350 x 350)	1012	2450	5305	5450
CSB44x1025	425	440	4	44	217	8500	2375	2385	5061	4 x (Ø520)	1100	2100	2140	4 x (1050 x 350)	1100	2100	4805	6150
CSB44x1030	510	440	4	44	217	8500	2375	2385	5561	4 x (Ø580)	1100	2100	2610	4 x (1250 x 350)	1100	2100	5305	6775
CSB50x1025	483	500	5	50	217	9725	2375	2385	5061	5 x (350 x 600)	1012	1925	2100	5 x (950 x 350)	1012	1925	4805	7185
CSB50x1030	579	500	5	50	217	9725	2375	2385	5561	5 x (350 x 700)	1012	1925	2550	5 x (1150 x 350)	1012	1925	5305	7885
CSB60x1025	579	600	6	60	217	11650	2375	2385	5061	6 x (350 x 600)	1012	1925	2100	6 x (950 x 350)	1012	1925	4805	8655
CSB60x1030	695	600	6	60	217	11650	2375	2385	5561	6 x (350 x 700)	1012	1925	2550	6 x (1150 x 350)	1012	1925	5305	9480



TECHNICAL SPECIFICATIONS		
Max working negative pressure	Pa	5000
Working Temperature	°C	-10<T<80
Electric control panel feeding	230 V AC 50Hz	
Bag cleaning system	pulse-jet	
Compressed air tank working pressure	bar	5