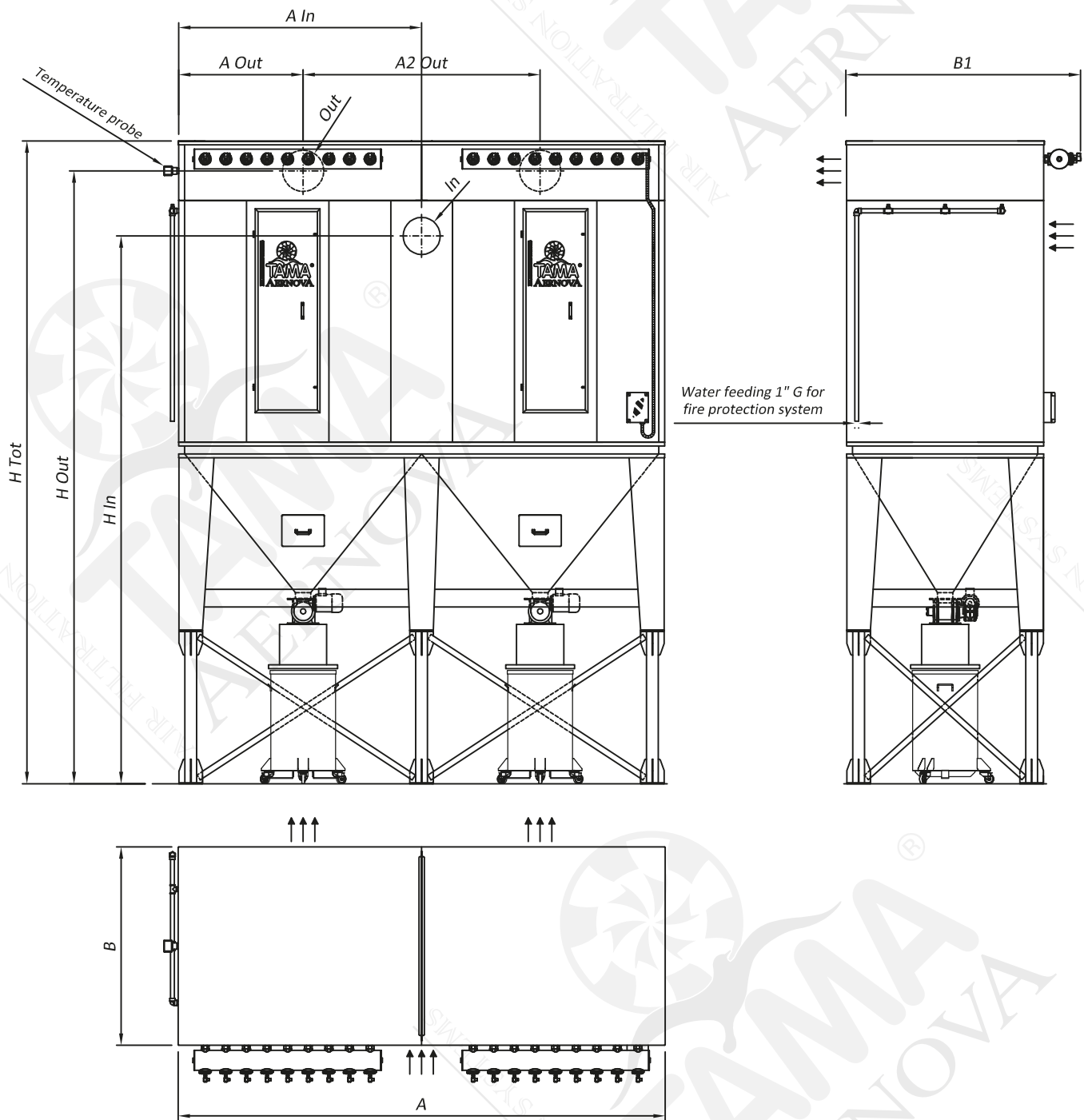


TECHNICAL SPECIFICATIONS														
Bag cleaning system					pulse-jet									
Filter media					PTFE/PTFE 700 g/m ²									
Max working negative pressure					4000 Pa									
Working temperature					120°C ← T ← -210°C									
Compressed air tank working pressure					3.5 bar									
					DIMENSIONS									
Model	Filtering surface	Number of filtering elements	Number of cleaning valves	Max air flow at 210°C	A	B	B1	H Tot	In	B In	H In	Out	A Out	H Out
	[m ²]	[-]	[-]	m ³ /h	[mm]	[mm]	[mm]	[mm]	[mm]	[mm]	[mm]	[mm]	[mm]	[mm]
HTV06X0620	28	36	6	1700	1675	1325	1685	5261	Ø280	400	4310	Ø350	837	5005
HTV07X0720	38	49	7	2200	1850	1500	1860	5261	Ø315	750	4292	400 x 350	925	5005
HTV08X0820	49	64	8	2900	2025	1675	2035	5361	Ø350	837	4375	500 x 350	1012	5105
HTV09X0920	63	81	9	3700	2200	1850	2210	5461	Ø400	925	4450	600 x 350	1100	5205
HTV09X1020	70	90	9	4200	2200	2025	2385	5461	350 x 400	837	4450	700 x 350	1100	5205
HTV09X1025	87	90	9	5200	2200	2025	2385	5961	350 x 500	837	4900	850 x 350	1100	5705
HTV09X1030	104	90	9	6200	2200	2025	2385	6461	350 x 600	837	5350	1000 x 350	1100	6205



TECHNICAL SPECIFICATIONS						DIMENSIONS										
Bag cleaning system						pulse-jet										
Filter media						PTFE/PTFE 700 g/m ²										
Max working negative pressure						4000 Pa										
Working temperature						120°C $\leftarrow T \leftarrow$ 210°C										
Compressed air tank working pressure						3.5 bar										
Model	Filtering surface	N. of filtering elements	N. of hoppers	N. of cleaning valves	Max air flow at 210°C	A	B	B1	H Tot	In	A In	H In	Out	A Out	A2 Out	H Out
	[m ²]	[-]	[-]	[-]	m ³ /h	[mm]	[mm]	[mm]	[mm]	[mm]	[mm]	[mm]	[mm]	[mm]	[mm]	[mm]
HTV14X0830	130	112	2	14	7600	3425	1675	2035	6361	350 x 750	1712	5325	650 x 350	881	1663	6105
HTV16X0830	148	128	2	16	8800	3775	1675	2035	6461	350 x 850	1887	5373	750 x 350	968	1838	6205
HTV18X0830	167	144	2	18	10000	4125	1675	2035	6561	350 x 1000	2062	5400	800 x 350	1056	2013	6305
HTV18X1030	209	180	2	18	12500	4125	2025	2385	6561	350 x 1200	2062	5300	1000 x 350	1056	2013	6305